


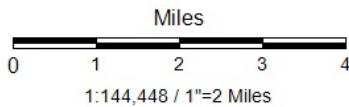
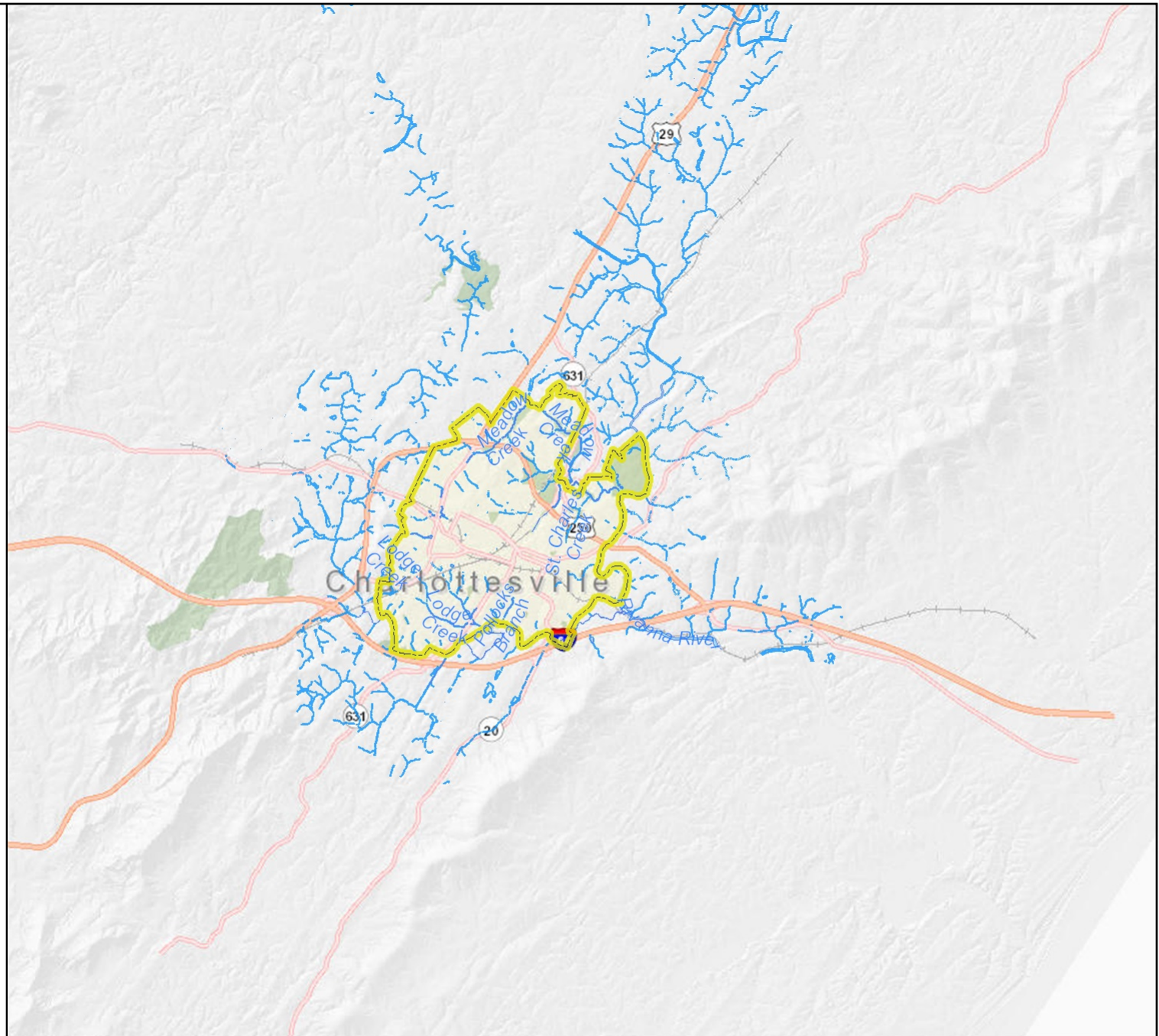


Legend

-  City Limits
-  Bodies of Water
-  Surface Water Course Line









Title: City of Charlottesville

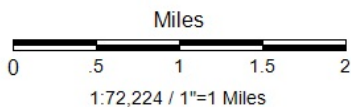
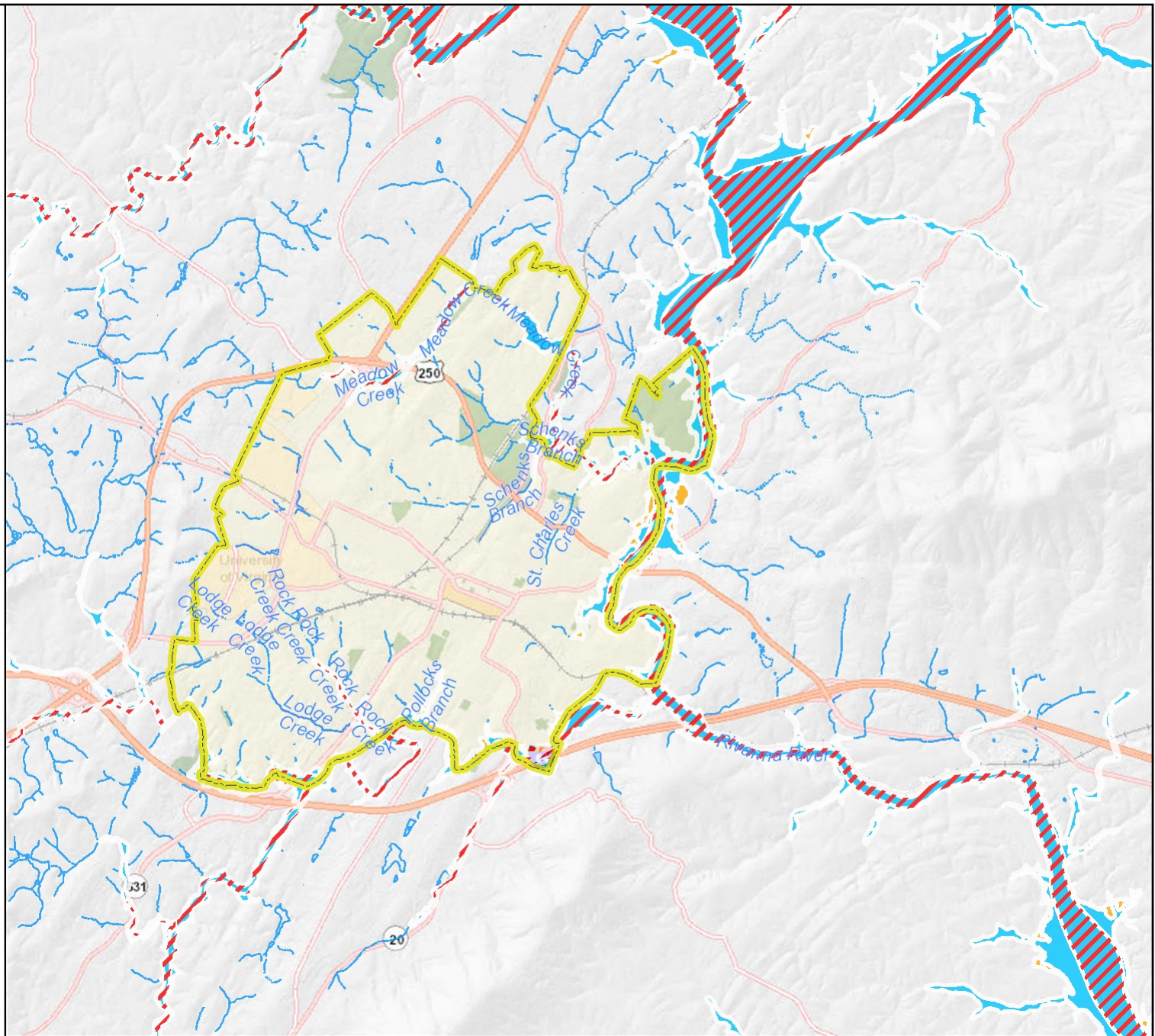
Date: 1/13/2025

DISCLAIMER: The City makes no warranties, expressed or implied, concerning the accuracy, completeness or suitability of this data, and it should not be construed or used as a legal description. The information displayed is a compilation of records, information, and data obtained from various sources, and the City is not responsible for its accuracy or how current it may be. Every reasonable effort is made to ensure the accuracy and completeness of the data. Pursuant to Section 54.1-402 of the Code of Virginia, any determination of topography or contours, or any depiction of physical improvements, property lines or boundaries is for general information only and shall not be used for the design, modification or construction of improvements to real property or for flood plain determination.



Legend

-  City Limits
-  Regulatory Floodway (2021 LOMR)
-  1% Exceedance Floodplain (BFE 2021 LOMR)
-  0.2% Exceedance Floodplain (2021 LOMR)
-  Bodies of Water
-  Surface Water Course Line









Title: City of Charlottesville Floodplains

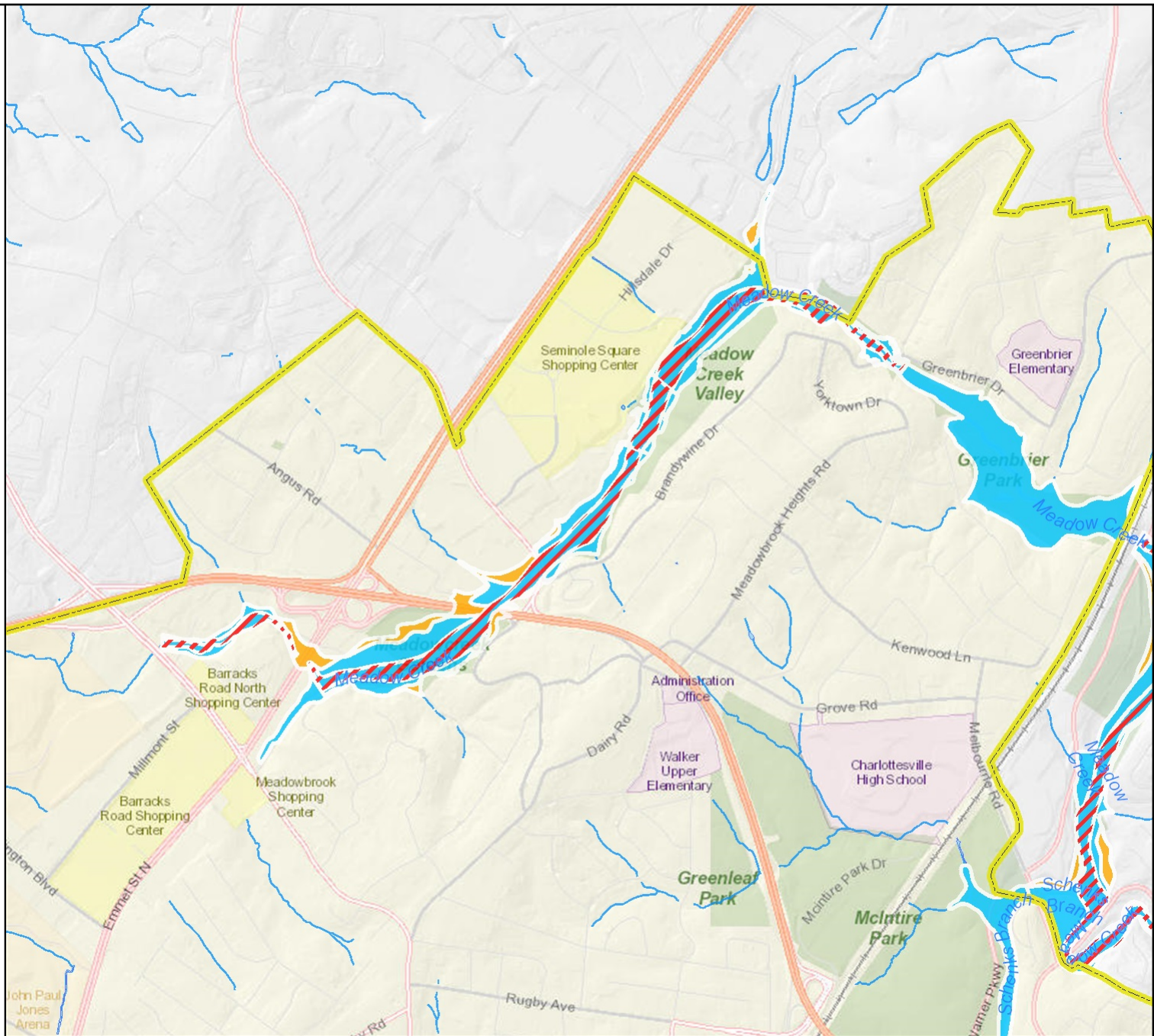
Date: 1/13/2025

DISCLAIMER: The City makes no warranties, expressed or implied, concerning the accuracy, completeness or suitability of this data, and it should not be construed or used as a legal description. The information displayed is a compilation of records, information, and data obtained from various sources, and the City is not responsible for its accuracy or how current it may be. Every reasonable effort is made to ensure the accuracy and completeness of the data. Pursuant to Section 54.1-402 of the Code of Virginia, any determination of topography or contours, or any depiction of physical improvements, property lines or boundaries is for general information only and shall not be used for the design, modification or construction of improvements to real property or for flood plain determination.



Legend

-  City Limits
-  Regulatory Floodway (2021 LOMR)
-  1% Exceedance Floodplain (BFE 2021 LOMR)
-  0.2% Exceedance Floodplain (2021 LOMR)
-  Bodies of Water
-  Surface Water Course Line



Feet
0 500 1000 1500 2000
1:18,056 / 1"=1,505 Feet

Title: City of Charlottesville Floodplains

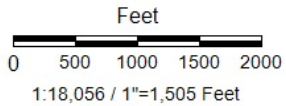
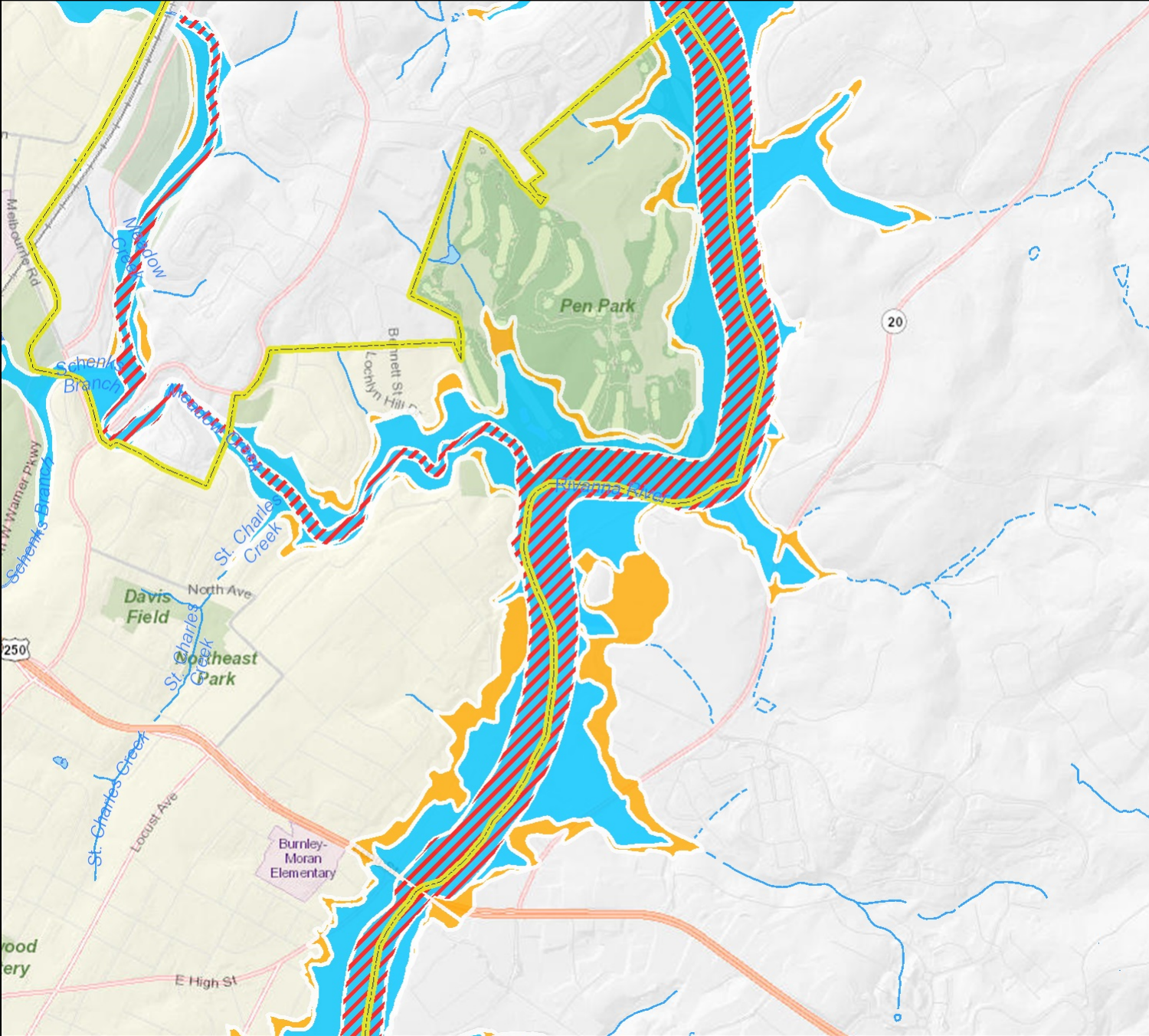
Date: 1/13/2025

DISCLAIMER: The City makes no warranties, expressed or implied, concerning the accuracy, completeness or suitability of this data, and it should not be construed or used as a legal description. The information displayed is a compilation of records, information, and data obtained from various sources, and the City is not responsible for its accuracy or how current it may be. Every reasonable effort is made to ensure the accuracy and completeness of the data. Pursuant to Section 54.1-402 of the Code of Virginia, any determination of topography or contours, or any depiction of physical improvements, property lines or boundaries is for general information only and shall not be used for the design, modification or construction of improvements to real property or for flood plain determination.



Legend

- City Limits
- Regulatory Floodway (2021 LOMR)
- 1% Exceedance Floodplain (BFE 2021 LOMR)
- 0.2% Exceedance Floodplain (2021 LOMR)
- Bodies of Water
- Surface Water Course Line



Title: City of Charlottesville Floodplains

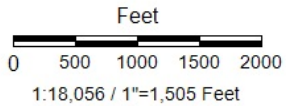
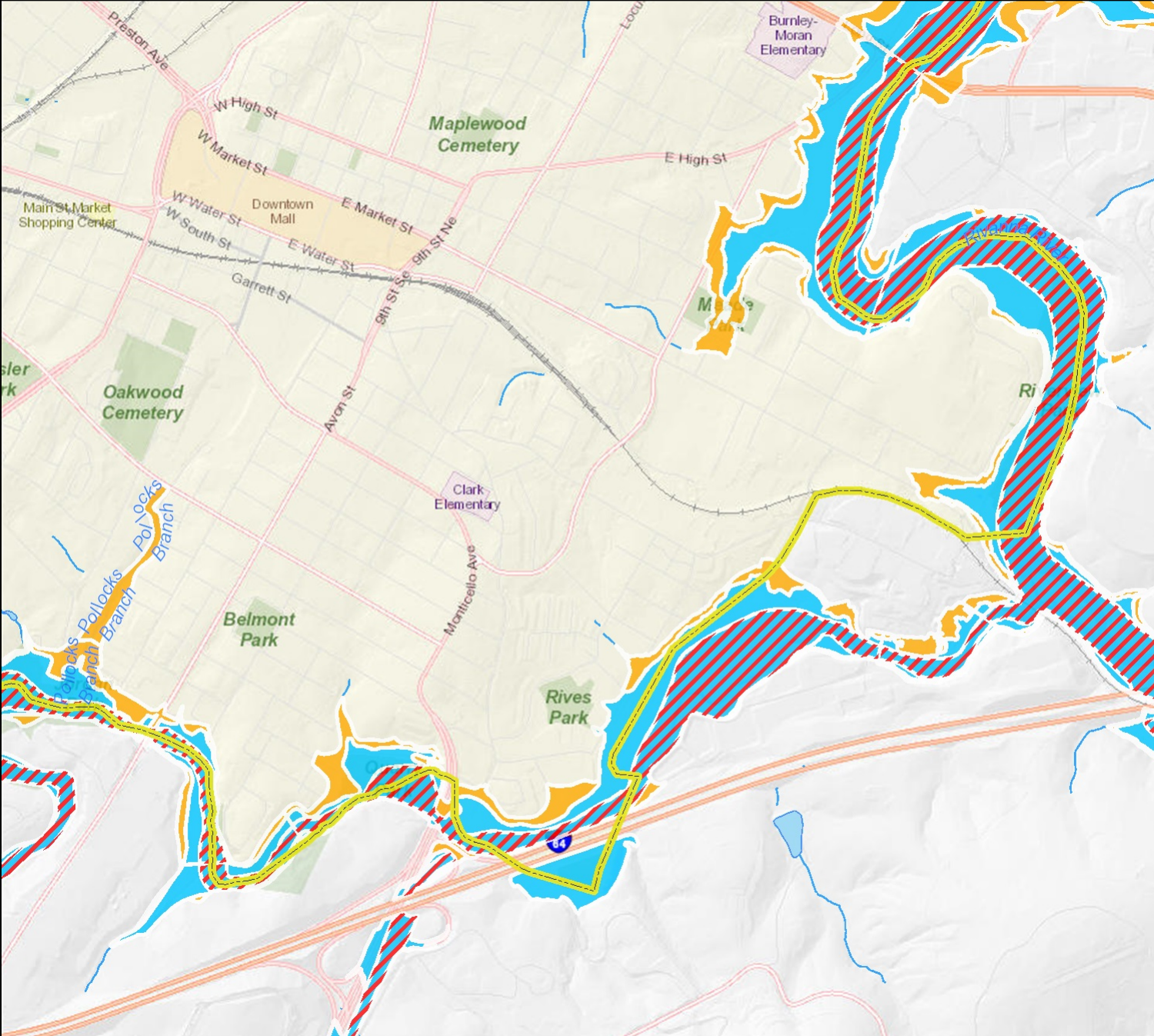
Date: 1/13/2025

DISCLAIMER: The City makes no warranties, expressed or implied, concerning the accuracy, completeness or suitability of this data, and it should not be construed or used as a legal description. The information displayed is a compilation of records, information, and data obtained from various sources, and the City is not responsible for its accuracy or how current it may be. Every reasonable effort is made to ensure the accuracy and completeness of the data. Pursuant to Section 54.1-402 of the Code of Virginia, any determination of topography or contours, or any depiction of physical improvements, property lines or boundaries is for general information only and shall not be used for the design, modification or construction of improvements to real property or for flood plain determination.



Legend

- City Limits
- Regulatory Floodway (2021 LOMR)
- 1% Exceedance Floodplain (BFE 2021 LOMR)
- 0.2% Exceedance Floodplain (2021 LOMR)
- Bodies of Water
- Surface Water Course Line









Title: City of Charlottesville Floodplains

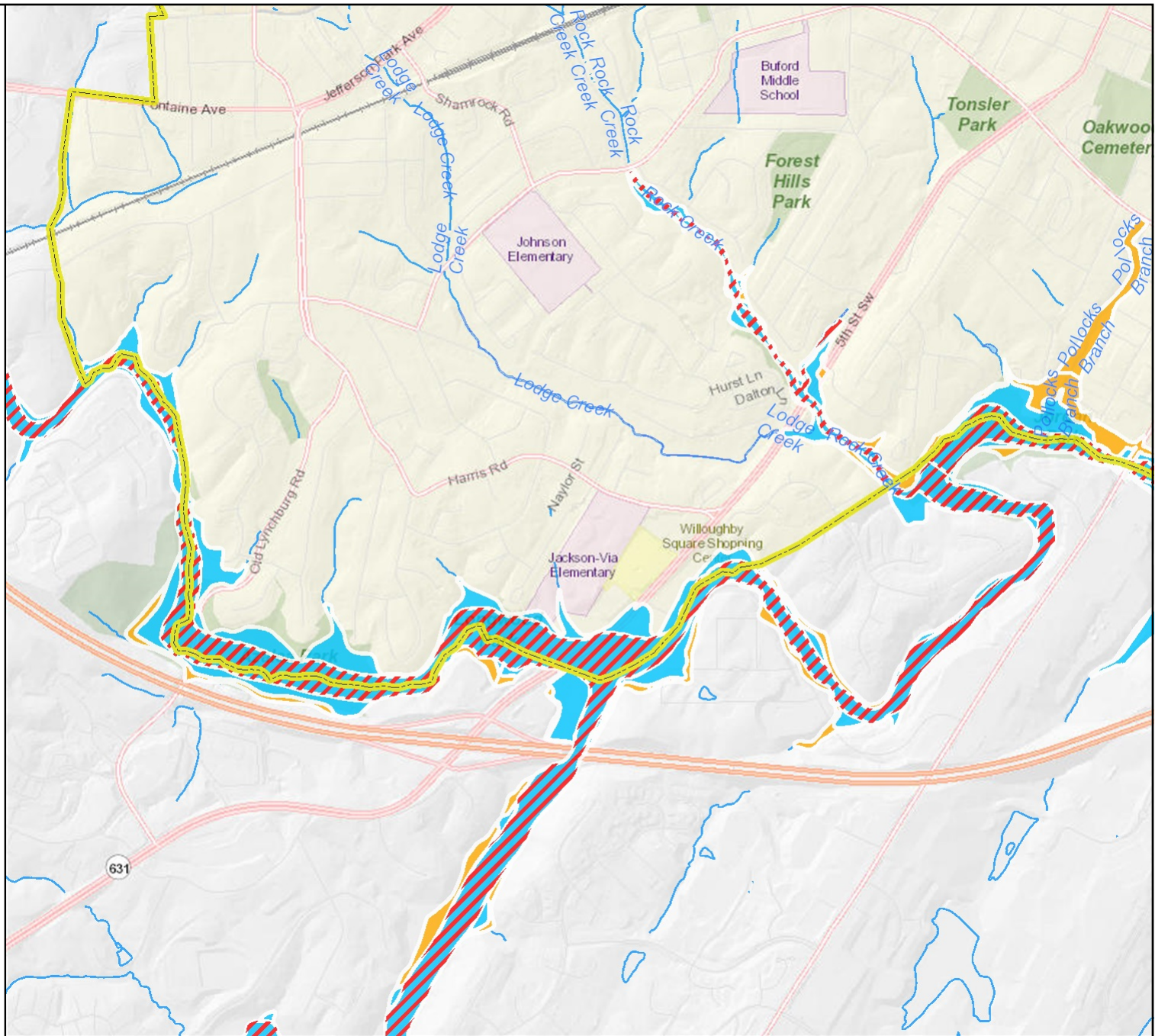
Date: 1/13/2025

DISCLAIMER: The City makes no warranties, expressed or implied, concerning the accuracy, completeness or suitability of this data, and it should not be construed or used as a legal description. The information displayed is a compilation of records, information, and data obtained from various sources, and the City is not responsible for its accuracy or how current it may be. Every reasonable effort is made to ensure the accuracy and completeness of the data. Pursuant to Section 54.1-402 of the Code of Virginia, any determination of topography or contours, or any depiction of physical improvements, property lines or boundaries is for general information only and shall not be used for the design, modification or construction of improvements to real property or for flood plain determination.



Legend

-  City Limits
-  Regulatory Floodway (2021 LOMR)
-  1% Exceedance Floodplain (BFE 2021 LOMR)
-  0.2% Exceedance Floodplain (2021 LOMR)
-  Bodies of Water
-  Surface Water Course Line



Feet
0 500 1000 1500 2000
1:18,056 / 1"=1,505 Feet

Title: City of Charlottesville Floodplains

Date: 1/13/2025

DISCLAIMER: The City makes no warranties, expressed or implied, concerning the accuracy, completeness or suitability of this data, and it should not be construed or used as a legal description. The information displayed is a compilation of records, information, and data obtained from various sources, and the City is not responsible for its accuracy or how current it may be. Every reasonable effort is made to ensure the accuracy and completeness of the data. Pursuant to Section 54.1-402 of the Code of Virginia, any determination of topography or contours, or any depiction of physical improvements, property lines or boundaries is for general information only and shall not be used for the design, modification or construction of improvements to real property or for flood plain determination.

